



Model shown: SPOA10N8G5BL  
Shown with optional accessories  
and additional equipment

Lift shown with **three-stage TRIO™** arms with **round (RA) adapters** Model #SPOA10-TRIO-RA / 10,000 lbs. capacity

# SPOA10TRIO™ Two-Post Lift Series

10,000 LBS. CAPACITY LIFTS

## INNOVATING...NOT IMITATING!

*The world's best selling asymmetrical lift is updated to service a broader range of vehicles - with one innovative arm design!*

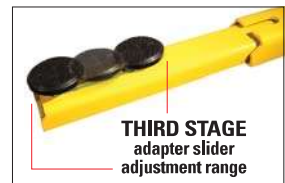
### Versatility

**TRIO™ Series asymmetric lifts** are three arm configurations in one low-profile arm design. With lifting capabilities of 10,000 lbs., Rotary engineers have created a **patented two-piece, three-stage asymmetrical arm** that accommodates a wider range of vehicles. Versatility in matching the right adapters on a single lift is a win for any service bay and adapters are now interchangeable with three vehicle contact options. Technicians can choose the best adapter set for each vehicle to be serviced all on the same arm.

### Vehicle Spotting Speed

**TRIO™ arms allow for quick positioning of the adapter to the vehicle pickup point without moving heavy two or three stage inner arms.**

The patented, integrated "third stage" adjustment easily and quickly slides the adapter to a pinpoint vehicle contact location saving technicians even greater set-up time. Discover the TRIO™ arm's competitive, industry exclusive advantage that only Rotary offers!



**Greater productivity equals higher profits per bay, every day!**

## NEW SPOA10TRIO™ THREE STAGES OF FLEXIBILITY IN A TWO-PIECE ARM

### STAGE ONE

Front and rear TRIO arms at full retraction.



#### 1st STAGE REACH

**Stage one** adapter micro adjustment range at full retraction.

Shown with RA adapter



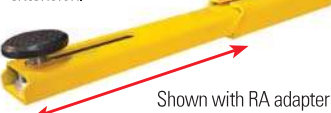
### STAGE TWO

Front and rear TRIO arms at full arm extension.



#### 2nd STAGE REACH

Single inner arm shown at full retraction and full extension.



### STAGE THREE

Front and rear TRIO arms at full arm extension with adapter adjustment range.

No heavy inner arms to move for positioning.



#### Patented multi-position adapter slider\*

Integrated "third stage" adapter adjustment easily slides to a pinpoint location.

\* 3rd stage RA has 8.34" (212mm) of adjustability / 3rd stage FA has 6.93" (176mm) of adjustability - EXAMPLE SHOWN ON TRIO REAR ARM WITH RA ADAPTER

#### 3rd STAGE REACH



**VERSATILE TRIO™ ARM ADAPTERS ARE INTERCHANGEABLE WITH THREE OPTIONS**  
*Technicians can choose the best optional adapter set for their lifting needs!\**

### Three-Position Flip-Up Adapters (FA)

LIFT MODEL #SPOA10-FA-TRIO



Multiple auxiliary adapters are available.

Perfect adapter for quick positioning on a variety of pick-up points.

**KIT #T100274**  
Includes four (4) adapters

### Round Adapters (RA)

LIFT MODEL #SPOA10-RA-TRIO



#FJ6219

Set of four (4) FJ6219 polymer pad round adapters. Adapters thread-up to allow protection of the vehicle underbody components or undercoating for no metal to metal contact. Also available for use with stackable inserts.

**SET OF 4 KIT #T100272**

### Truck Adapters (TA)

LIFT MODEL #SPOA10-TA-TRIO



**#T110564**  
For 10,000 lbs. (4536kg) capacity lifts - includes four (4) adapters.

Auxiliary adjustable thread-up adapter with rubber pads allow for protection of underbody vehicle components or undercoating. Required use when lifting trucks and other frame vehicles. For 10,000 lbs. (4536kg) capacity lifts

**SET OF 4 KIT #T100273**

Stackable inserts come standard on 10,000 lbs. and 12,000 lbs. capacity TA models



\*NEW SPOA10 TRIO LIFTS COME STANDARD WITH YOUR CHOICE OF FA, RA OR TA ADAPTERS. EACH ADDITIONAL ADAPTER SET IS SOLD SEPARATELY.

*True Asymmetrical Lifts are rotated 30° allowing maximum door opening for improved access to vehicle interior.*



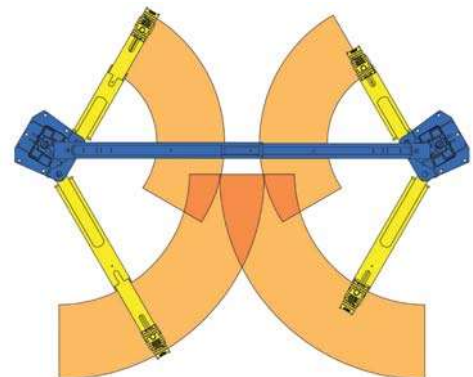
Model shown: SPOA10N8G5BL  
Shown with optional accessories and additional equipment



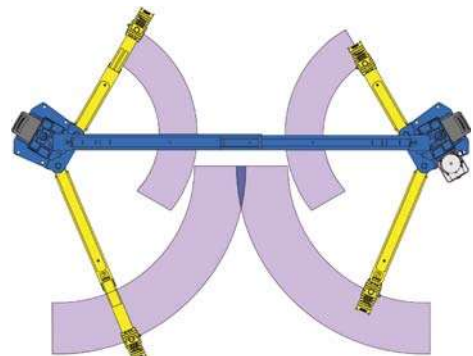
### NEW TRIO™ ARM SWEEP vs CONVENTIONAL 2-STAGE ARMS

*GREATER REACH AND ENHANCED RETRACTION*

Shown with three-position FA adapters



**NEW TRIO™ ARMS with FLIP-UP ADAPTERS**



**CONVENTIONAL 2-STAGE ARMS with FLIP-UP ADAPTERS**

**Rotary DESIGN ADVANTAGE**

## Two-Post TRIO™

**PRODUCTIVITY & PERFORMANCE**

1. PATENTED, TWO-PIECE, THREE-STAGE ARM DESIGN
2. GREATER REACH WITH LOW PROFILE ARMS
3. AVAILABLE WITH SHOCKWAVE  
- DC POWER PROVIDES 2X FASTER SPEED
4. ADAPTERS ARE INTERCHANGEABLE ON ONE ARM
5. THIRD-PARTY ETL GOLD CERTIFIED



## ASYMMETRIC LIFTS *PERFECT DESIGN FOR CARS and LIGHT TRUCKS*

### SPOA10-SWTRIO™

10,000 LBS. CAPACITY

### SHOCKWAVE-EQUIPPED TWO-POST LIFTS; STANDARD WITH SPEED, CHOICE & R.O.I.

*These are the fastest lifts in the world specifically designed for service bays where speed is essential. Achieve your goals of greater technician productivity and higher profits with exclusive lift technology available only from Rotary.*

- NEW low profile TRIO™ 2-piece, three-stage arms
- DC Power with continuous onboard 110v charger
- Spotline™ motion activated laser
- Original "Double S" column design
- ALI Gold Certified



Lift shown with  
**three-stage TRIO™**  
arms with round  
(RA) adapters



Model #SPOA10-TRIO-RASW / 10,000 lbs. capacity

#### ALSO AVAILABLE WITH

- **Three-stage TRIO™ arms with FA Adapters** Model #SPOA10-TRIO-FASW / 10,000 lbs. capacity
- **Three-stage TRIO™ arms with Truck Adapters** Model #SPOA10-TRIO-TASW / 10,000 lbs. capacity



**2X faster rise  
and descent**

**25 second rise time!  
19 second descent!\***



Model shown: SPOA10U8G5RD  
SHOCKWAVE equipped asymmetric lift

\*Actual rise and descent times vary depending on weight of vehicle.

**CUSTOMIZE WITH YOUR  
SHOCKWAVE-EQUIPPED  
LIFT WITH YOUR CHOICE  
OF THESE ARMS AND  
SUPERSTRUCTURES**

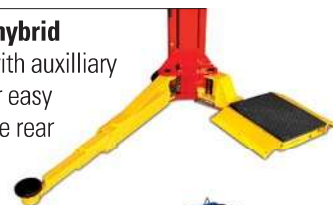


Ultra low profile **movable  
pad** slides easily into place  
for lifting unibody vehicles

#SPOA7-MPSW  
7,000 lbs. capacity

**Exclusive pad / arm hybrid**  
combines a front pad with auxilliary  
frame-engaging arm for easy  
spotting and three-stage rear  
arms for versatility.

#SPOA7-HYSW  
7,000 lbs. capacity



### SPOA10TRIO™ 10,000 LBS. CAPACITY

### THE INDUSTRY STANDARD JUST GOT MORE VERSATILE!

*The industry's original and best selling asymmetrical lift is updated for even greater productivity.*

- NEW low profile TRIO™ 2-piece, three-stage arms
- Customize with three easy-to-change adapter options
- True asymmetrical rotated column design
- Original "Double S" column design
- Adjustable lift height options to service taller vehicles
- ALI Gold Certified

#### ALSO AVAILABLE WITH

- **Three-stage TRIO™ arms with FA Adapters**  
Model #SPOA10-TRIO-FA / 10,000 lbs. capacity
- **Three-stage TRIO™ arms with Truck Adapters**  
Model #SPOA10-TRIO-TA / 10,000 lbs. capacity

Lift shown with  
**three-stage TRIO™**  
arms with round  
(RA) adapters



Model #SPOA10-TRIO-RA  
10,000 lbs. capacity



Model shown: SPOA10N8G5BL  
Shown with optional accessories and additional equipment



# LIFT SPECIFICATIONS / 7,000 lbs. to 10,000 lbs. CAPACITIES

Available with  
**SHOCKWAVE™**



**SPOA10-TRIO-FA**  
TRIO 3-STAGE Arms  
Flip Up Adapters



**SPOA10-TRIO-TA**  
TRIO 3-STAGE Arms  
Truck Adapters



**SPOA10-TRIO-RA**  
TRIO 3-STAGE Arms  
Round Adapters



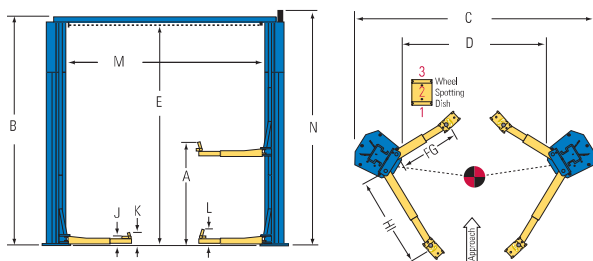
**SPOA7-HYSW**  
Fixed Front Pads with  
3-Stage Rear Arms  
SHOCKWAVE LIFT



**SPOA7-MPSW**  
Drive-Over Moveable Pads  
SHOCKWAVE LIFT

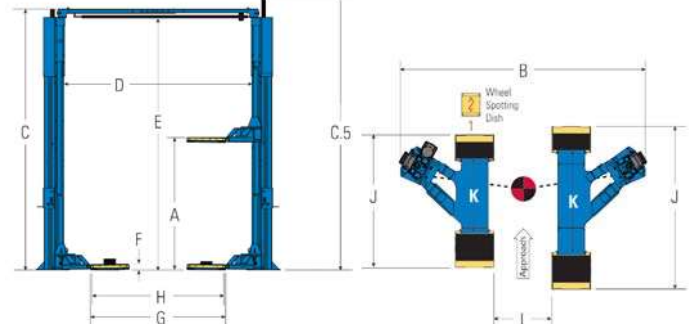
Model	SHOCKWAVE Models	SPOA10-TRIO-FASW SHOCKWAVE LIFT	SPOA10-TRIO-TASW SHOCKWAVE LIFT	SPOA10-TRIO-RASW SHOCKWAVE LIFT	SPOA7-HYSW SHOCKWAVE LIFT	SPOA7-MPSW SHOCKWAVE LIFT
A.	Capacity	10,000 lbs. (4536kg)	10,000 lbs. (4536kg)	10,000 lbs. (4536kg)	7,000 lbs.	Lifting Capacity Per Platform
						7,000 lbs. (3157kg) 3,500 lbs. (1588kg)
	Rise*	72 1/2" - 78" (1841 - 1981mm)	72" - 82 1/2" (1829 - 2095mm)	71 7/8" - 73 1/8" (1826 - 1857mm)	76 7/8" (1953mm)	Rise*
B.	WITH SHOCKWAVE	75 1/2" - 81" (1917 - 2057mm)	75" - 85 1/2" (1905 - 2172mm)	74 7/8" - 76 1/8" (1902 - 1933mm)		74" - 77" (1880 - 1956mm)
C.	Height Overall †	11' 8 1/2" (3569mm)	11' 8 1/2" (3569mm)	11' 8 1/2" (3569mm)	11' 8 1/2" (3569mm)	Width Overall**
D.	Width Overall** (outside of base plate)	11' 5 3/8" (3489mm)	11' 5 3/8" (3489mm)	11' 5 3/8" (3489mm)	11' 5 3/8" (3489mm)	Floor to Top of Overhead
E.	Drive-Thru Clearance	95 1/4" (2416mm)	95 1/4" (2416mm)	95 1/4" (2416mm)	83 3/8" (2118mm)	Cylinder at Full Rise
F.	Floor To Overhead Switch	11' 2 3/4" (3423mm)	11' 2 3/4" (3423mm)	11' 2 3/4" (3423mm)	11' 2 3/4" (3423mm)	Width Between Columns
G.	Reach (front arm min.)	21 3/4" (552mm)	20 1/2" (521mm)	20 1/2" (521mm)	N/A	Floor to Overhead Switch
H.	Reach (front arm max.)	43 1/2" (1105mm)	40 3/4" (1035mm)	40 3/4" (1035mm)	N/A	Drive Over Clearance
I.	Reach (rear arm min.)	37" (940mm)	34 1/2" (876mm)	34 1/2" (876mm)	64 1/2" (1638mm)	Drive-Thru Clearance
J.	Reach (rear arm max.)	61" (1548mm)	58 1/4" (1479mm)	58 1/4" (1479mm)	30-3/8" (771mm)	Outside of Pad to Outside of Pad
K.	Min. Adapter Height	4 3/4" (121mm)	4 1/8" (105mm)	3 31/32" (101mm)	Rear arm: 3 3/4" (95mm) Front pad: 2 7/8" (73mm) Front arm: 5 1/4" (133mm)	Inside of Pad to Inside of Pad
L.	Max. Adapter Height	N/A	5 3/8" (136mm)	5 1/4" (133mm)		Overall Pad Length Retracted
M.	Low Step Height	6 7/8" (175mm)	N/A	N/A	N/A	Extended
N.	High Step Height	10 3/8" (263mm)	N/A	N/A	N/A	Min. / Max. Distance Between Pads
	Inside Columns	107 1/4" (2727mm)	107 1/4" (2727mm)	107 1/4" (2727mm)	107 1/4" (2727mm)	Min. Adapter Height
	Cylinder Height	11' 10 1/2" (3619mm)	11' 10 1/2" (3619mm)	11' 10 1/2" (3619mm)	12' 4 1/2" (3772mm)	Motor / Voltage***
	WITH SHOCKWAVE	12' 4 1/2" (3772mm)	12' 4 1/2" (3772mm)	12' 4 1/2" (3772mm)		5hp / 110v
	Motor / Voltage 1Ø****	2 HP / 208v-230v	2 HP / 208v-230v	2 HP / 208v-230v	5 HP / 110 v	Time of Full Rise / Descent
	WITH SHOCKWAVE	5 HP / 110v	5 HP / 110v	5 HP / 110v		25 / 19 seconds
	Time of Full Rise / Descent	45 / 40 seconds	45 / 40 seconds	45 / 40 seconds	25 / 19 seconds	Time of Full Rise / Descent
	WITH SHOCKWAVE	25 / 19 seconds	25 / 19 seconds	25 / 19 seconds		25 / 19 seconds
	Ceiling Height Required:	12' (3658mm)	12' (3658mm)	12' (3658mm)	12' 6" (3810mm)	Ceiling Height Required
	WITH SHOCKWAVE	12' 6" (3810mm)	12' 6" (3810mm)	12' 6" (3810mm)		12' 6" (3810mm)
	Min. Bay Size	12' x 24' (3658 x 7315mm)	12' x 24' (3658 x 7315mm)	12' x 24' (3658 x 7315mm)	12' x 24' (3658 x 7315mm)	Min. Bay Size
						12' x 24' (3658 x 7315mm)

Models: SPOA10-TRIO-FA SPOA10-TRIO-TA SPOA10-TRIO-RA



\* Rise measures lowest or highest position of the supplied adapters from floor to full cylinder stroke.  
 \*\* Overall heights and widths reflect standard settings. Alternate settings may be available, refer to Installation Instruction Manual or consult factory for details.  
 \*\*\* Optional 3-phase electrical available.  
 † Optional higher rise and extended height options available for SPOA10 models - consult factory for details.

Models: SPOA7-MPSW



\* Rise is measured to top of pad / Rise dimensions increase by 3" with extended rise options:  
 NO PAD: 74" 1 1/2" PAD: 75 1/2" 3" PAD: 77"  
 \*\* Overall heights and widths reflect standard settings. \*\*\* Optional 3-phase electric available

Standard color of lifts are blue and red unless otherwise noted. Gray and black are available at no additional charge.

Additional colors are available, consult your Rotary® representative for details. RAL5005 RAL3002 RAL7040 RAL9005